

ELECTRICAL REQUIREMENTS:
480 V, 150 AMP, 3 PHASE
60Hz SERVICE.
TOWER GROUNDING TO BE
PROVIDED BY OTHERS.

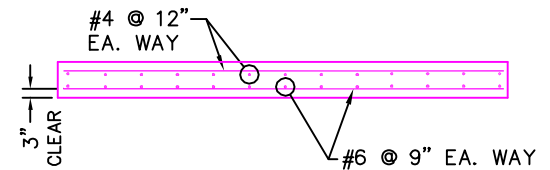
WEATHER PROOF GROUND
FAULT CIRCUIT INTERRUPTER
RECEPTACLE 110 V, 15 AMP
DISCONNECT BOX 38"
FROM TOP OF PAD TO
BOTTOM OF DISCONNECT

NOTE-1

NOTE: CONTRACTOR ASSUMES ALL RESPONSIBILITY IN VERIFYING THAT LOCATION OF HOIST, SHOWN ON THIS DRAWING IS CORRECT, AND DOES NOT INTERFERE WITH BUILDING STRUCTURE.

BASE PAD SCHEDULE-MIN. REINFORCEMENT			
TOWER HEIGHT	PAD DEPTH	TOP REIN-FORCEMENT	BOTTOM RE-INFORCEMENT
0-300'	12"	NO 4@12" EA. WAY	NO 6@9" EA. WAY

PAD TO BE WITHIN $\pm\frac{1}{2}$ " OF LEVEL
REQ'D SOIL BEARING CAPACITY:
2000 P.S.F. MIN.
CONCRETE STRENGTH: 3000 P.S.I.
REINFORCING STEEL: $f_y=60,000$ P.S.I.



SECTION A-A



PLAN OF BASE PAD (US8000S)

SCALE: 1/4" = 1'-0"

LAYOUT - US8000S

USA HOIST COMPANY, INC.

820 NORTH WOLCOTT AVE. 773-486-6900
CHICAGO, ILLINOIS, 60622 773-486-1450 FAX

THIS DRAWING AS WELL AS THE SUBJECT MATTER OF THE DESIGN, THEREON ARE THE EXCLUSIVE PROPERTY OF USA HOIST COMPANY, INC. AND ARE TO BE TREATED BY YOU AS CONFIDENTIAL PROPRIETARY INFORMATION. NEITHER THIS DRAWING NOR THE SUBJECT MATTER OF THE DESIGN THEREON SHALL BE DUPLICATED OR DISCLOSED BY YOU WITHOUT THE EXPRESS WRITTEN CONSENT OF USA HOIST COMPANY, INC.

COPYRIGHT (C) 2010 USA HOIST COMPANY, INC. ALL RIGHTS RESERVED

REV.	DESCRIPTION	BY	DATE

TITLE: TEMPORARY CONSTRUCTION HOIST

JOB:

US8000D BASE PAD

DRAWN BY:
MB

JOB NO:

DATE:

PRELIMINARY

CONT:

ADD:

DWG NO:

US8S-BP

REV.

-